

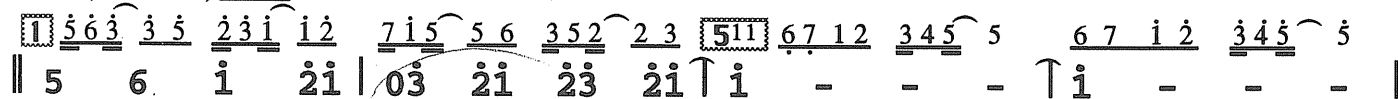
7 -- 5

♩ = 118

山頂黑狗兄

洪一峰 詞
日本曲
庾澄慶 唱
(新力唱片)

Tempo (小鼓2.4拍) Brass



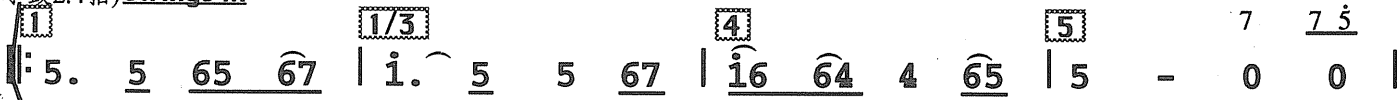
喔

Bs: 1.1 1.5 1.1 1.5 ~

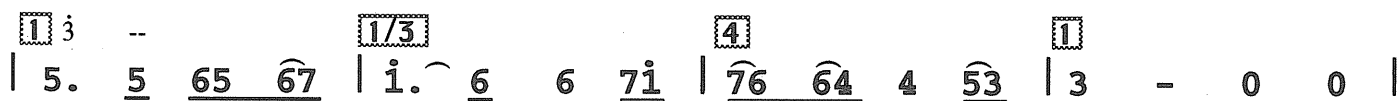


喔

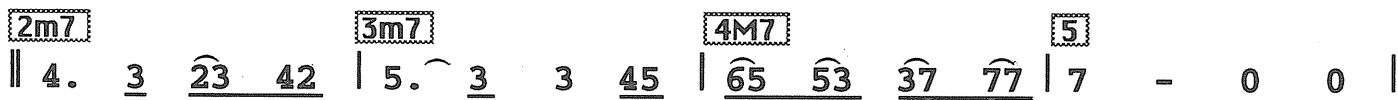
(小鼓2.4拍) Strings in



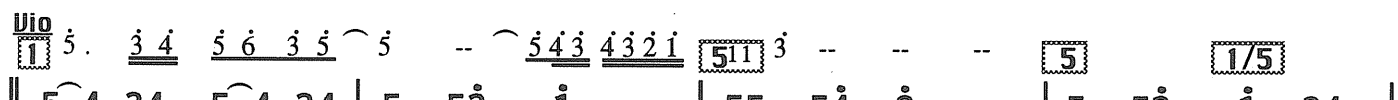
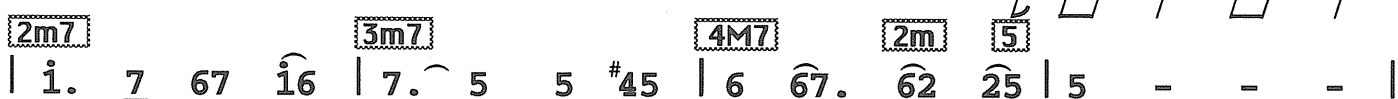
Bs: 1.1 5 1.1 5.1 3.3 1 3 3 3 1 3 ~



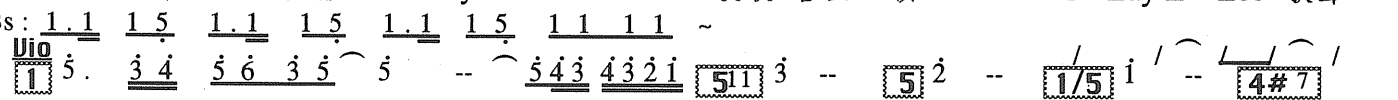
(Lee)



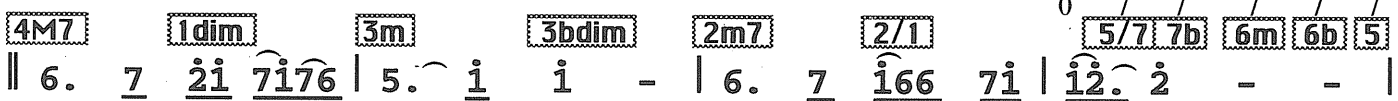
Bs: 2 2 2.2 6.2 ~



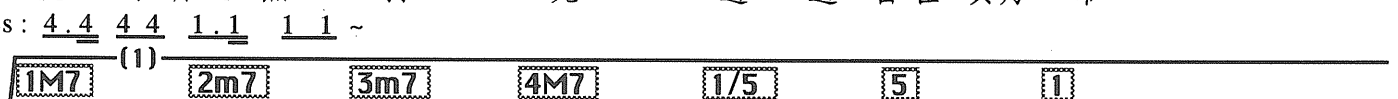
Bs: 1.1 1.5 1.1 1.5 1.1 1.5 1.1 1.1 ~



幼 軟 緣 投 得 人 痛 U Lay E Lee U Lay E U Lay E Lee



Bs: 4.4 4.4 1.1 1.1 ~



姑 娘 聽 著 心 肝 神 魂 跟 伊 行 央 三 託 四 甲 伊 求 親 成

Tempo(only H.N)

1 EP 6b 7b 4 1 6b 7b 4

|| $\underline{b715} \underline{57} \underline{453} \underline{34} | \underline{137} \underline{71} \underline{574} \underline{45} | \underline{b341} \underline{13} \underline{b715} \underline{57} | 4 - - - |$

Bs: no

Tempo(小鼓2.4拍)

1 EP 6b 7b 4 1 6b 7b 4

|| $\underline{b715} \underline{57} \underline{453} \underline{34} | \underline{137} \underline{71} \underline{574} \underline{45} | \underline{b341} \underline{13} \underline{b715} \underline{57} | 4 - - - |$

Bs: 1.1 1.5 $\underline{b6} \underline{b6} \underline{b6} \underline{b6} \sim$

Brass

1 1 5 511 3 -- -- --

|| $\underline{563} \underline{35} \underline{231} \underline{12} | \underline{715} \underline{56} \underline{352} \underline{23} | \underline{67} \underline{12} \underline{345} \underline{5} | \underline{67} \underline{12} \underline{345} \underline{5} |$

Bs: 1.1 1.5 1.1 1.5 ~ (U Lay E Lee)

Brass

1 2 3 1 1 2 6 1 5 5 6 3 5 2 2 3 1 2 6 6 1 511 5 -- -- -- Unis

|| $5 \ 6 \ 1 \ \underline{21} | \underline{03} \ \underline{21} \ \underline{23} \ \underline{21} \uparrow 1 - - - | 5 \ \underline{5.4} \ \underline{444} \ 5 :||$

喔

(2)

1M7 2m7 3m7 4M7 1/5 5 1 511

|| $\underline{5.4} \underline{34} \underline{5.4} \underline{34} | 5 \ \underline{53} \ 1 \ \underline{34} | \underline{5.5} \ \underline{53} \ 4 \ \underline{42} | 1 - - \underline{66} |$

姑娘聽著 心肝神魂 跟伊 行央三 託四甲伊 求親成

4 1/3 2 5 1

|| $\underline{64} \underline{4} - \underline{66} | \underline{53} \underline{3} - \underline{55} | \underline{\#42\#} \underline{\#42\#} \underline{42.} \underline{42.} | 1 - - \underline{66} |$

Lay E U Lay E U lay e o lay e o lay e lay e Lee U

4 1/3 2m 5 1 7b13

|| $\underline{64} \underline{4} - \underline{66} | \underline{53} \underline{3} - \underline{55} | \underline{424} \underline{424} \underline{42.} \underline{42.} | 1 - - |$

Lay E U Lay E U lay e o lay e o lay e lay e Lee

1 (軍樂進行曲) 4 1/5 3/5# 6m 2m7 3m7 4 1/5

|| $\underline{5.4} \underline{34} \underline{5.4} \underline{34} | 5 \ \underline{53} \ 1 - | \underline{55} \ \underline{54} \ 2 - | 5 \ \underline{53} \ 1 \ \underline{34} |$

有聽聲 看無影 U Lay E Lee 歌喉響山嶺 U Lay E Lee 歌聲

7b 4 3m 3bdim 2m7 5 1 (升半調)

|| $\underline{5.4} \underline{34} \underline{5.4} \underline{34} | 5 \ \underline{53} \ 1 - | 5 \ \underline{53} \ 4 \ \underline{42} | 1 - 0 \ 0 |$

幼軟緣投得 人痛 U Lay E Lee U Lay E U Lay E Lee

1M7 Tempo 2m7 3m7 4M7 5 5 511 5 5 5 -- -- 5 -- --

|| $5 \ \underline{65} \ 1 \ \underline{21} | \underline{03} \ \underline{21} \ \underline{12} \ \underline{565} \uparrow 5 - - - \uparrow 5 - - - |$

喔 (U Lay E)

1M7 2m7 3m7 4M7 5 5 511 5 5 5 -- -- 5 -- --

|| $5 \ \underline{65} \ 1 \ \underline{21} | \underline{03} \ \underline{21} \ \underline{12} \ \underline{565} \uparrow 5 - - - \uparrow 5 - - - |$

喔 (U Lay E)

1M7 2m7 3m7 4M7 511 1/5 4/5

|| $\underline{5.4} \underline{34} \underline{5.4} \underline{34} | 5 \ \underline{53} \ 1 - | \underline{55} \ \underline{54} \ 2 - | 5 \ \underline{53} \ 1 \ \underline{34} |$

有聽聲 看無影 U Lay E Lee 歌喉響山嶺 U Lay E Lee 歌聲

1M7 2m7 3m7 4M7 511 1

|| $\underline{5.4} \underline{34} \underline{5.4} \underline{34} | 5 \ \underline{53} \ 1 - | 5 \ \underline{53} \ 4 \ \underline{42} | 1 - 0 \ 0 :||$

幼軟緣投得 人痛 U Lay E Lee U Lay E U Lay E Lee (Repeat and fade out)