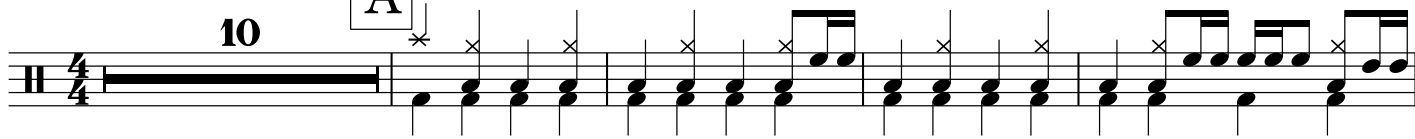


Counting Stars

♩ = 122

10

A



15

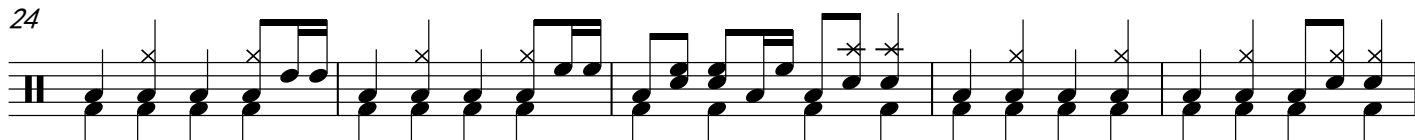


B

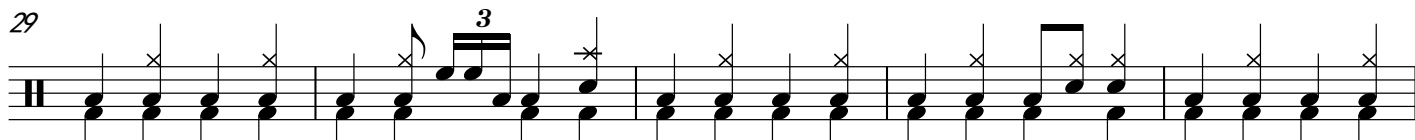
19



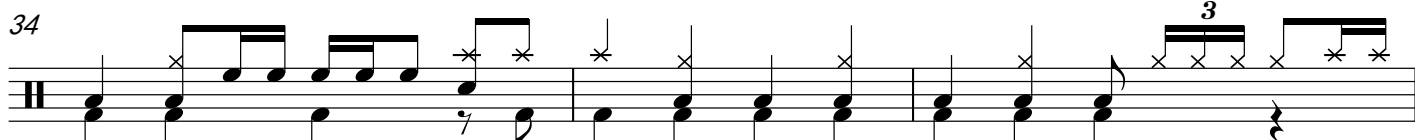
24



29



34

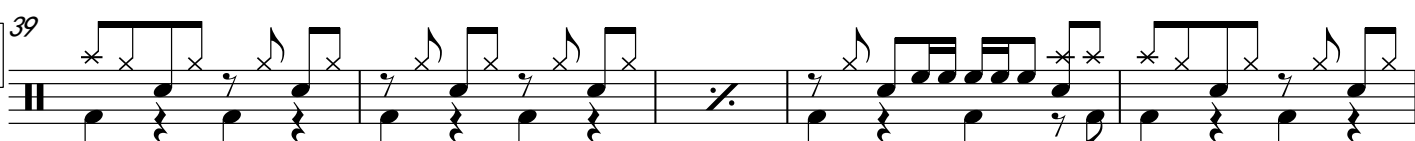


37

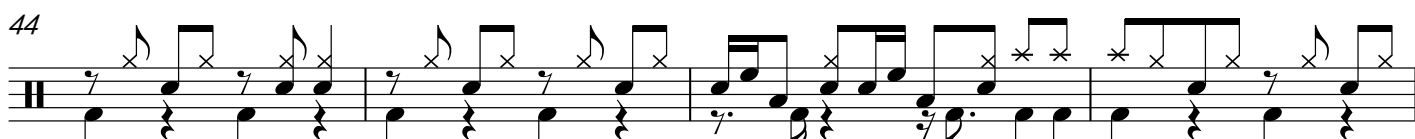


C

39



44



48

Musical notation for measure 48, showing a treble clef, a key signature of one sharp (F#), and a 2/4 time signature. The melody consists of eighth and sixteenth notes, with some notes beamed together. There are also rests and a final quarter note. The bass line consists of a single eighth note followed by a quarter rest, then a quarter note, and finally a half note.

52

Example 52 is a 12-measure piece in 2/4 time. The melody is on a single staff with a treble clef. It features eighth and sixteenth notes, rests, and a final double bar line. The bass line is on a single staff with a bass clef, featuring whole and half notes, and rests. The key signature has one sharp (F#).

55

Example 55

[illegible]

63

Musical notation for exercise 63, featuring a treble clef, a key signature of one sharp (F#), and a 4/4 time signature. The melody consists of eighth and sixteenth notes, with some notes marked with an 'x' and a '*' symbol. The bass line consists of whole notes.

67



71

Exercise 71 is a short piece in 2/4 time. It begins with a treble clef and a key signature of one sharp (F#). The melody is written in the treble staff, and the bass line is in the bass staff. The piece consists of four measures. The first measure has a treble staff with a quarter note (F#4), an eighth note (G#4), and a quarter rest, followed by a bass staff with a quarter note (F#2), a quarter rest, and a quarter note (F#2). The second measure has a treble staff with a quarter note (G#4), an eighth note (A4), and a quarter rest, followed by a bass staff with a quarter note (G#2), a quarter rest, and a quarter note (G#2). The third measure has a treble staff with a quarter note (A4), an eighth note (B4), and a quarter rest, followed by a bass staff with a quarter note (A2), a quarter rest, and a quarter note (A2). The fourth measure has a treble staff with a quarter note (B4), an eighth note (C5), and a quarter rest, followed by a bass staff with a quarter note (B2), a quarter rest, and a quarter note (B2). The piece ends with a double bar line.

E ⁷⁵

79

83

83

Counting Stars

